


Metal Air, Oil & Water Hose Reels

Mountable Steel Air Hose Reels

- › Heavy ribbed steel plate to ensure strong support
- › Spring located in the middle to ensure stability
- › Four direction non-snap rollers to reduce hose wear abrasion

Tech Sheet
10183



 Maximum Working Pressure:
20 bar

Rubber Air Hose, Spring Rewind, 3/8"

Order Code	Specification
SAHR-15-38	15m, 3/8" Hose, 3/8" BSPT Connections
SAHR-15N-38	No Hose, Capacity 15m, 3/8" Rubber Hose



Swivel Bracket, to suit SAHR-15-38

Order Code
SAHR-15-38-SB



Swivel Bracket, to suit SAHR-15-12

Order Code
SAHR-15-12-SB

Tech Sheet
10186



Hi-Vis, Spring Rewind, 1/2"

Order Code	Specification
SAHR-20-12SHV06T	20m, 3/8" BSPT Brass Male

Tech Sheet
10187



R6, Spring Rewind, 1/2"

Order Code	Specification
SAHR-15-12SR608F	15m, 1/2" BSPP Brass Female

 Maximum Working Pressure:
28 bar

Tech Sheet
10185



- › Adjustable guide arm for multi-position mounting
- › Special swivel joint for easy maintenance and repair
- › Ball bearing swivel joint structure, largely reduces friction

Rubber Air Hose, Spring Rewind, 1/2"

Order Code	Specification
SAHR-15-12	15m, 1/2" Hose, 1/2" BSPT Connections
SAHR-15N-12	No Hose, Capacity 15m 1/2" Rubber Hose

Tech Sheet
10188



Rubber Tech, Spring Rewind, 1/2"

Order Code	Specification
SAHR-15-38SRT06F	15m, 3/8" BSPP Brass Female

Tech Sheet
10184



Hi-Vis, Spring Rewind, 3/8"

Order Code	Specification
SAHR-15-38SHV06T	15m, 3/8" BSPT Brass Male

Tech Sheet
10195



Spring Rewind, 3/4"

Order Code	Specification
SAHR-40N-34	No Hose, Capacity 40m, 3/4" Rubber Hose

Metal Air, Oil & Water Hose Reels

Mountable High Pressure Water Steel Hose Reels

- › Compact for applications with critical space requirement
- › Heavy duty steel construction with corrosion resistant powder coating
- › Four direction non-sag rollers to reduce hose wear abrasion
- › Multi position ratchet lock and easy tension adjustment
- › Spring fully closed and lubricated
- › Full flow swivel
- › Adjustable guide arm for multi position mounting

Tech Sheet
10189



Maximum Working Pressure:
150 bar

Black 1 Wire Pressure Wash, Spring Rewind, 3/8"

Order Code	Specification
SWHR-15-38	15m, 3/8" 1 Wire, 3/8" BSP Inlet - M22 x 1.5 outlet
SWHR-15N-38	No Hose, Capacity 15m 3/8" 1 Wire

Tech Sheet
10190



Blue 1 Wire Pressure Wash, Spring Rewind, 3/8"

Order Code	Specification
SWHR-15-38SB122K	15m, M22 x 1.5 Female

Tech Sheet
10191

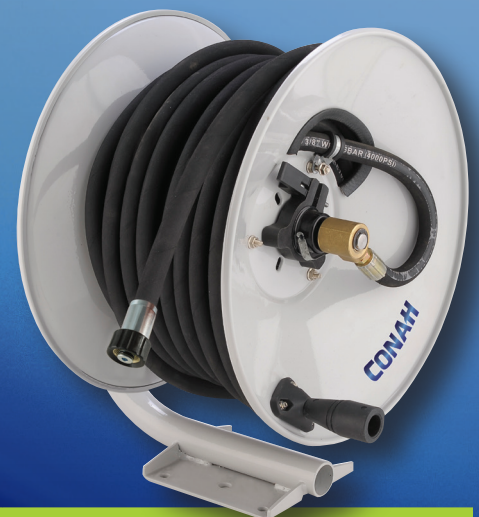
Maximum Working Pressure:
270 bar



Blue 2 Wire Pressure Wash, Manual Rewind, 3/8"

Order Code	Specification
SWHR-30-38MB222K	30m, M22 x 1.5 Female

Tech Sheet
10192



Black 2 Wire Pressure Wash, Manual Rewind, 3/8"

Order Code	Specification
SWHR-30-38	30m, 3/8" 2 Wire, M22 x 1.5 Connections
SWHR-30N-38	No Hose, Capacity 30m 3/8" 2 Wire